

# Visiting

# LAGUNA ART MUSEUM



# Museum



**I am going to a museum called  
Laguna Art Museum.**



# Museum



**Laguna Art Museum is located on  
the corner of Coast Hwy and Cliff  
Dr.**

# Parking



I will park in the metered parking spots around the museum or in the surrounding neighborhoods.



# Loading Zone



**There is also a loading zone to drop guests off.**



# Metered Parking



**There is metered parking on Cliff Drive. Guests with a CA handicap placard can park in the meters for free.**



# Metered Parking



**Continue on Cliff Drive past Las Brisas restaurant to enter the museum.**

# Street Parking



**There is also parking in the neighborhoods. Many visitors park on Aster St. or Cypress Dr.**



# Street Parking



**Continue down Aster St. which turns  
into Cliff Dr.**

# Street Parking



**Cross the crosswalk at Coast HWY and Cliff Drive where you will enter the museum.**

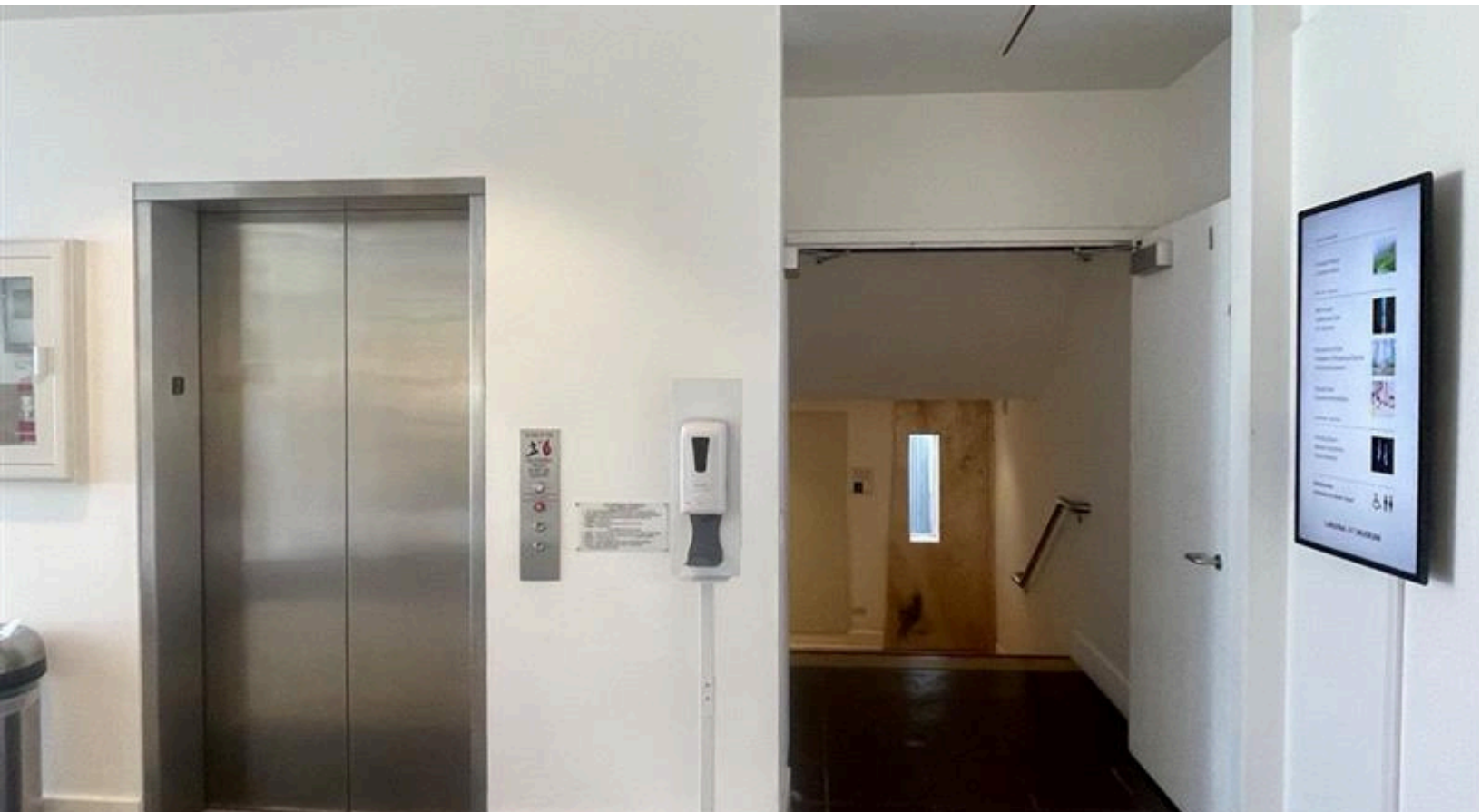


# Lobby



**Enter the glass doors into the museum lobby. Check in at the front desk. Please leave food, drinks, and large backpacks at the front desk.**

# Museum



**There are three floors to the museum.  
There are stairs and an elevator that  
can take guests to each floor.**



# Museum



**Keep 5 feet of space between yourself and the artwork. Do not touch any artwork so we can protect it for future generations.**

# Bathrooms



**The bathroom is located down the stairs or elevator to the right.**